

Boiler

It is an enclosed vessel that provides a means for combustion and transfers heat to water until it becomes hot water or steam. The hot water or steam under pressure is then usable for transferring the heat to a process.

The boiler system is made up of: Feed water system, Steam system, Fuel system

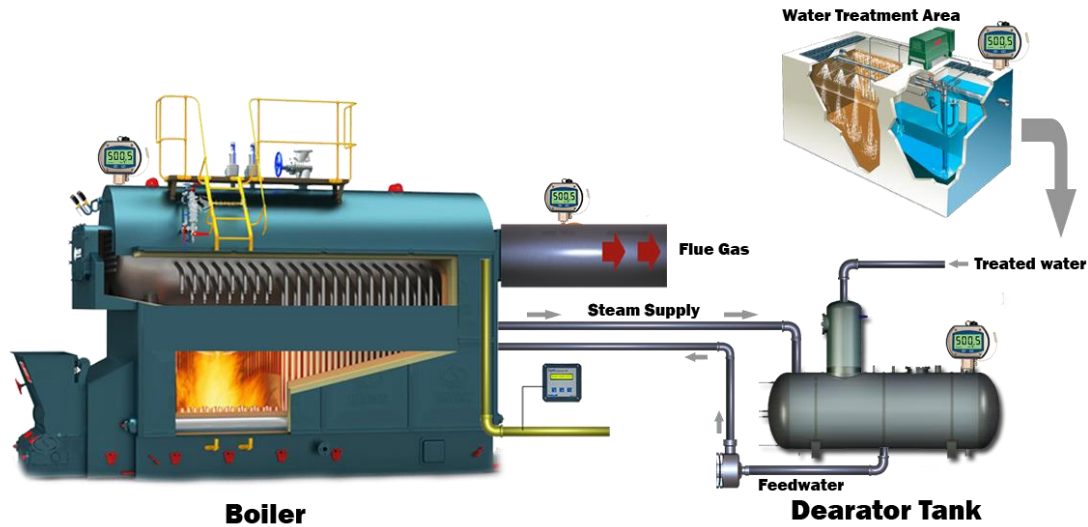


Fig. Basic Understanding on Boiler

The *feed water system* provides water to the boiler and regulates it automatically to meet the steam demand. The water supplied to boiler that is converted to steam is called feed water.

The *steam system* collects and controls the steam produced in the boiler. Steam is directed through a piping system to the point of use. Throughout the system, steam pressure is regulated using valves and checked with steam pressure gauges.

The *fuel system* includes all equipment used to provide fuel to generate the necessary heat. The equipments required in the fuel system depend on the type of fuel used in the system.

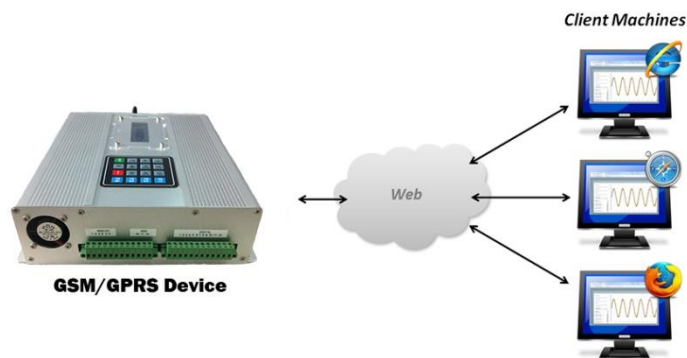
Parameter Requirements for Boiler Monitoring

- *Steam Pressure*
Minimum range: 7.5 bar, Maximum range: 10.5 bar
- *Flue Gas Temperature*
Minimum range: 120 deg. Celsius, Maximum range: 250 deg. Celsius
- *Deaerator Temperature*
Minimum range: 90 deg. Celsius, Maximum range: 100 deg. Celsius
- *Conductivity or TDS*
Maximum range: 3,500 ppm
- *Dissolved Oxygen Level*
Minimum range: 3 % , Maximum: 10 %

WEBSITE PLATFORM

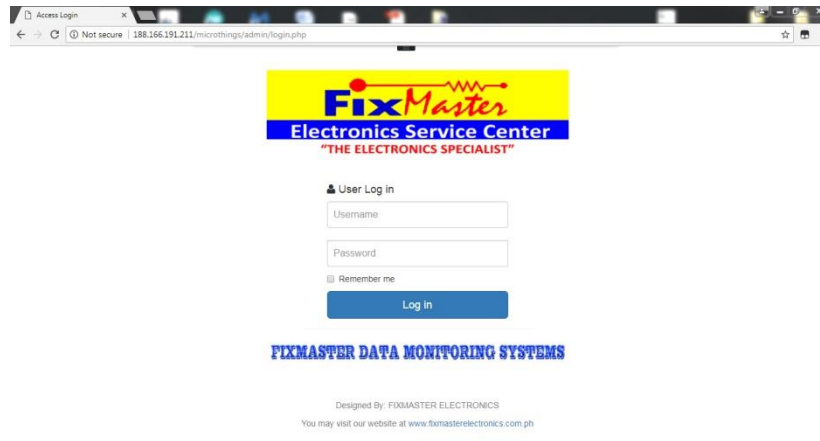
A website is one kind of a so called virtual place where a users or clients interacts or have an access online. The most common purpose of it is for people to monitor the activity of their business anywhere in the globe.

Fixmaster Electronics provide a platform website for its client to monitor their system anywhere online.

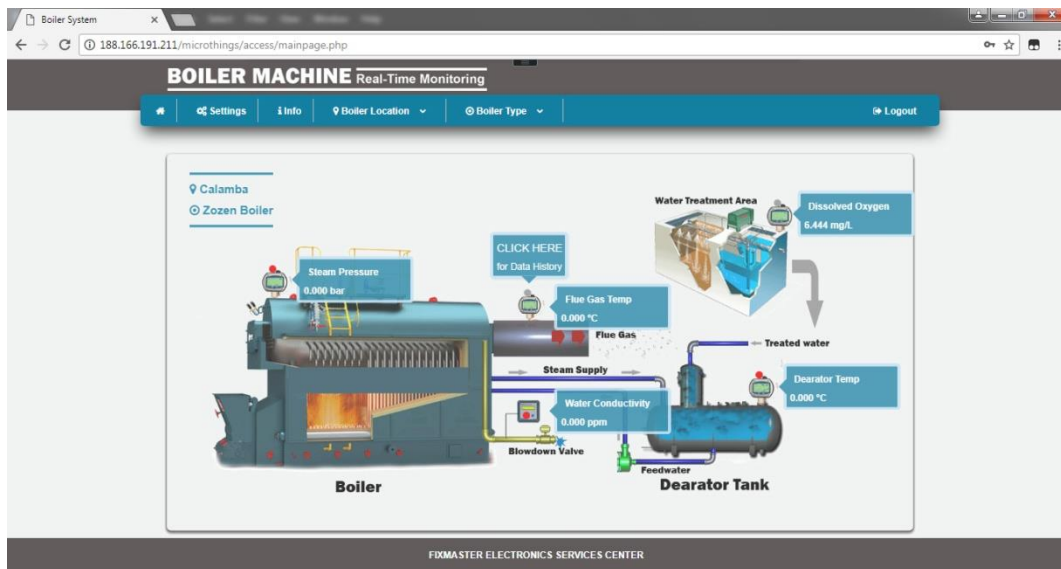


Here's the some screenshots of the website:

I. LOGIN Page

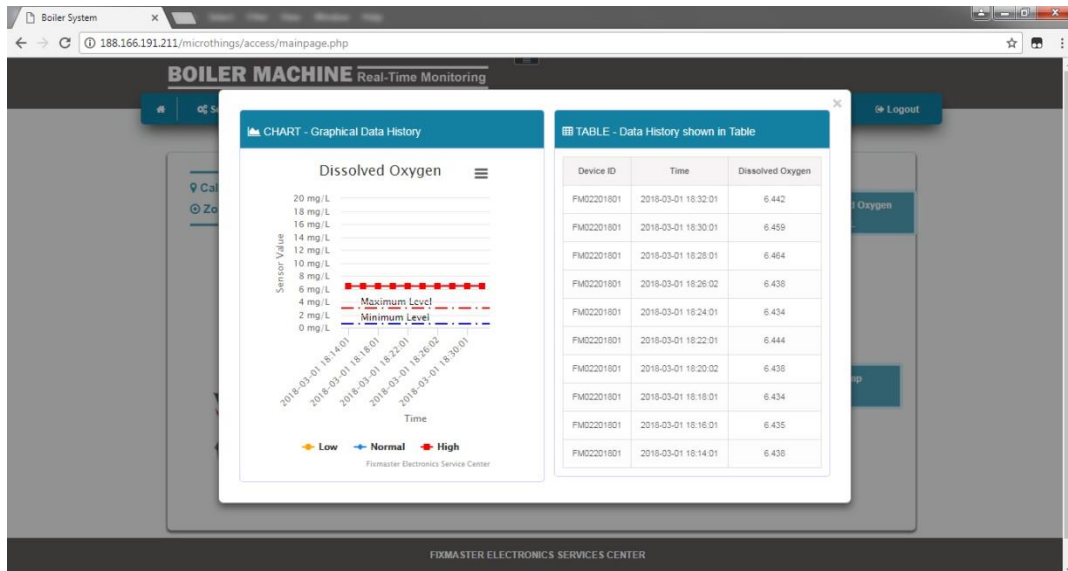


II. Main page



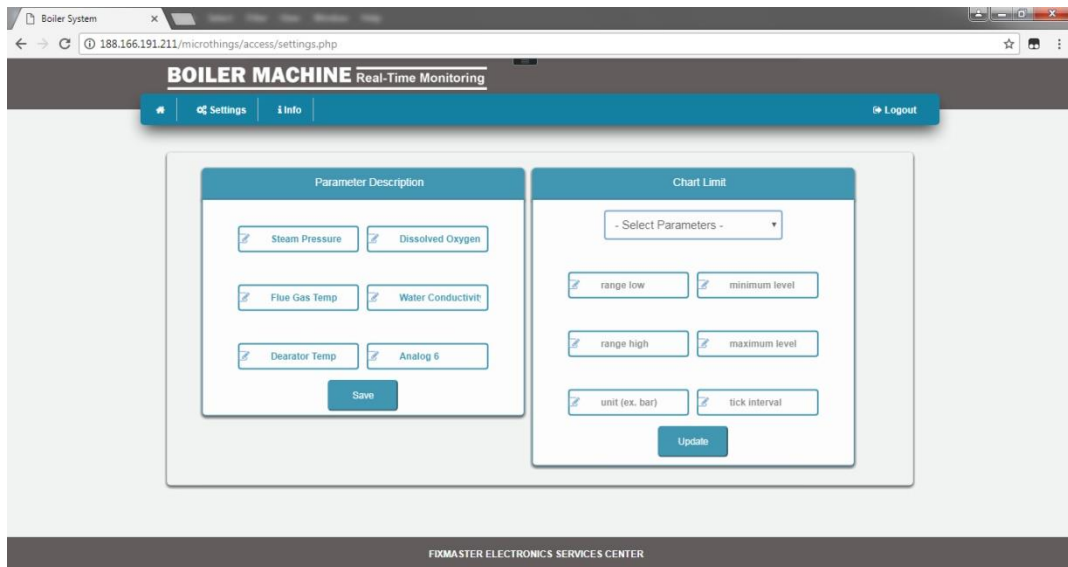
Graphical image for Boiler Machine was intended to provide an easy solutions for monitoring the system and to be able to get with basic knowledge on boiler.

III. Charts and Table Data History



Charts and tables are used to review, analyze, verify, and create reports of each activity.

IV. Settings



It is now easy for the user to edit the description of parameters, or range and level adjustment for data chart.

